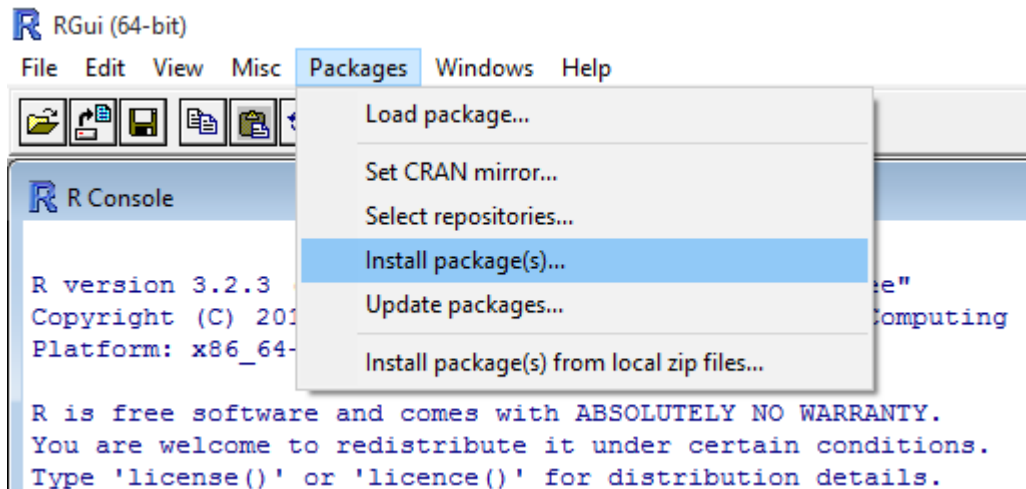
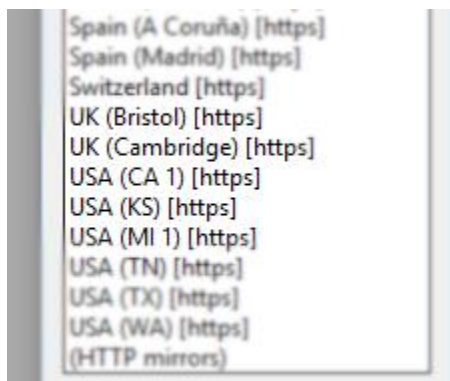


USING R/R-COMMANDER

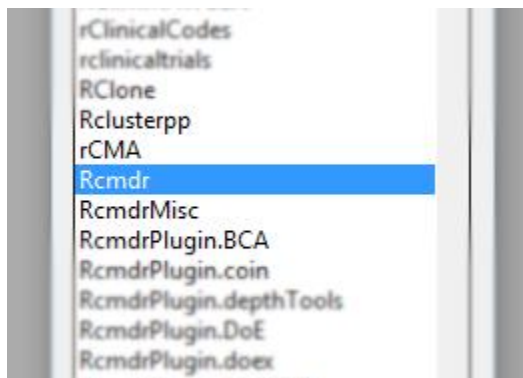
1. Download and install R-3.2.3: <https://cran.r-project.org/bin/windows/base/R-3.2.3-win.exe> Accept all default settings during initial installation.
2. Along the top ribbon, go to Packages/Install Packages:



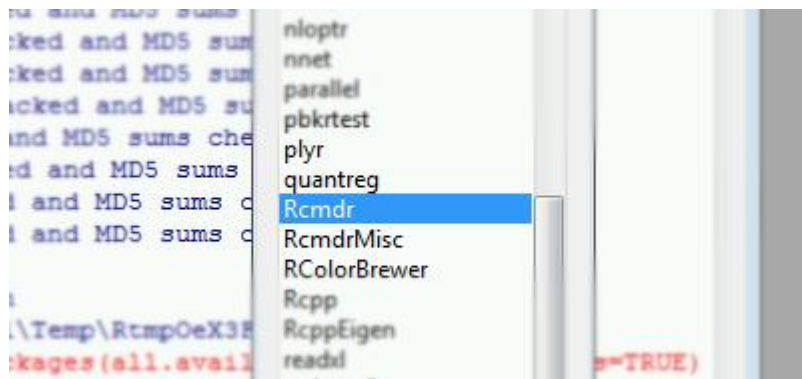
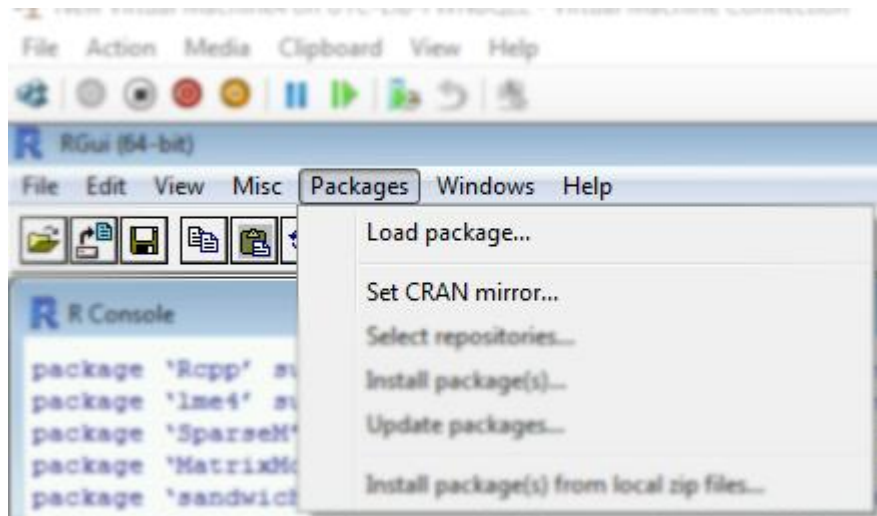
3. Choose USA (CA1) from the drop down list of servers:



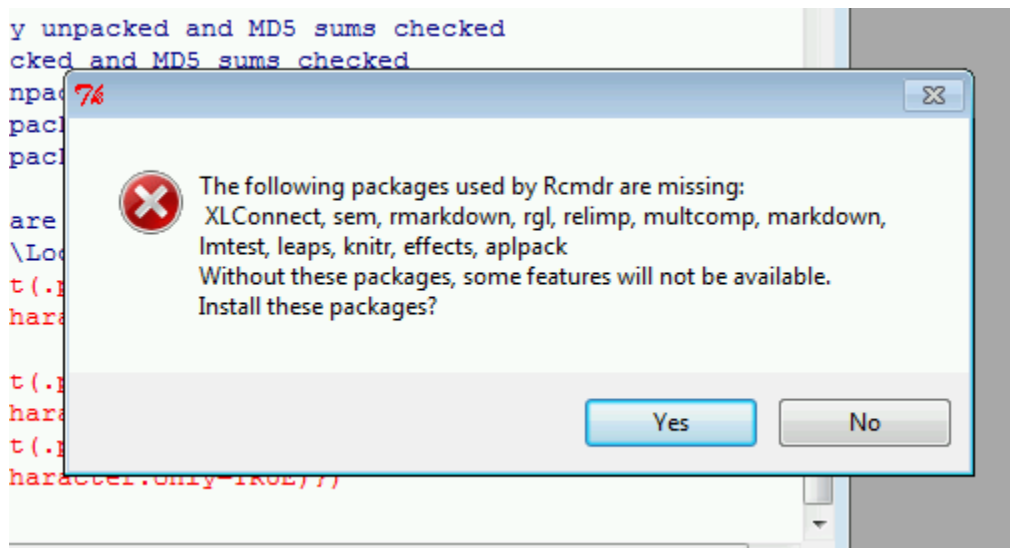
4. Choose Rcmdr from the large dropdown list of packages:



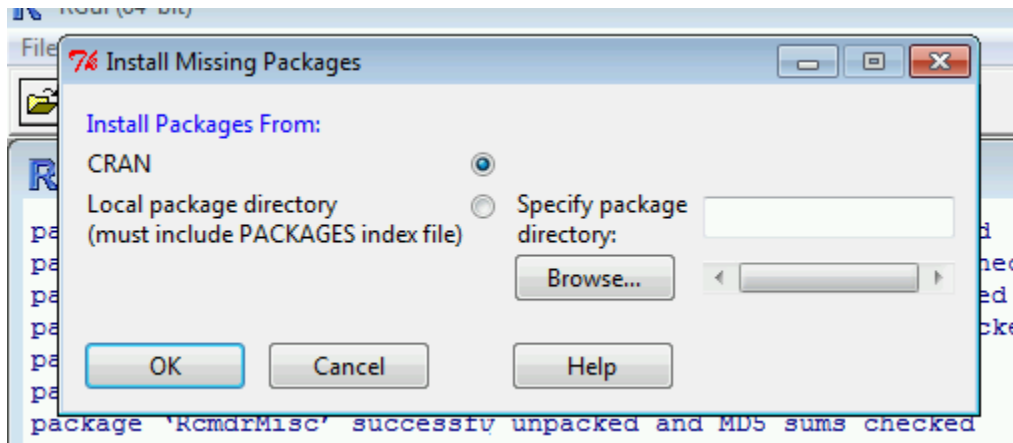
5. After Rcmdr and the corresponding packages install, you then return to the top ribbon to load Rcmdr:



6. You will likely then be prompted with a form of this pop up...to which you reply Yes:



And on the next screen...accept what is pre-selected and choose OK:



7. After secondary packages install, you should be at the point where Rcmdr is loaded and ready for use:

